
MARPOL HARBOUR VESSEL

TM-083-23

www.sym-naval.com



PORT VESSEL NEWBUILDING



MARPOL VESSEL

TM-083-23

Waste collection

The MARPOL Harbour vessel TM-083-23 is a unique model. With a Lpp of 23.96 meters and a GT tonnage <150, it is the right solution to provide MARPOL service in the most efficient way.

With a total load capacity of 230 m³ for MARPOL I category waste, the MARPOL Harbour vessel TM-083-23 is certified to meet a flash point below 60° and has a double hull. It also has a hydraulic deck crane with a capacity of 2.5 tons to 8 m to handle MARPOL V containers.

Taking into account the operational requirements of the shipowners, the requirements of the Port Authorities specifications, the flag regulations and the class rules, the MARPOL Harbour vessel of SYM Naval has been designed to achieve the highest load capacity and versatility. Thus, its certification extends to MARPOL I, IV, V and VI.

BUREAU VERITAS

✚ HULL AND MACHINERY, OIL TANKER, FLASH POINT < 60°, SHELTERED WATERS

SPANISH FLAG
GROUP III, S CLASS

TYPE OF LOAD
MARPOL I, IV, V, VI



MARPOL Vessel TM-083-23

Lpp<24 m, GT<150, MARPOL FLASH POINT <60°



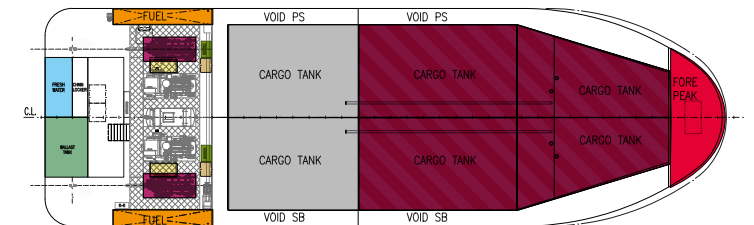
A challenge for naval engineering

Designed to meet the highest demands



MARPOL HARBOUR VESSEL

General scheme



| | |
|-----------------------------------|--|
| DIESEL OIL | 11 m ³ fuel load capacity |
| ENGINES | Double Doosan L126 TIH engine with 360 hp power each |
| AUXILIARY GENERATORS | Two MECCALTE 108kW 400V 50 Hz generators |
| FRESH WATER TANKS | 2.17 m ³ capacity |
| BILGE | Liverani 3700 pumps |
| WASTE WATER DISCHARGE PUMP | FEIT 40VA pumps |
| FIRE PUMP | FEIT A76 pumps |

SYM Naval reproduces the vessel by integrating all the systems into a digital model through which the shipowner can check the status of the project before its construction. The MARPOL Harbour vessel has been specifically designed for the collection of MARPOL hydrocarbon waste and given its technical specifications and dimensions, it has been a high level technical and technological challenge.



CYTECMA. Cytecma hydraulic marine cranes are new generation equipment, designed and built to carry out rugged marine jobs in highly corrosive, wet and saline environments.

STURDINESS. The entire structure of Cytecma marine cranes is built with S690 class steel, high resistance and particularly adapted to resist corrosion and oxidation.

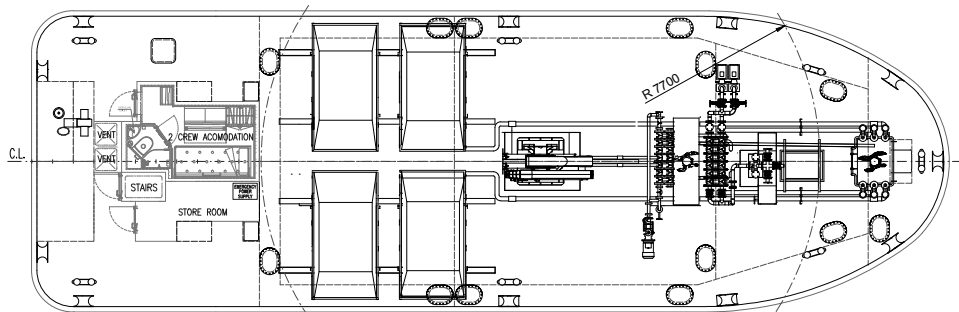
| TECHNICAL DATA | |
|----------------------|-----------|
| WORK PRESSURE | 300 bar. |
| OIL FLOW | 45 l/min. |
| CRANE ROTATION ANGLE | 360° |
| ROTATION MOMENT | 45 kNm. |
| OWN WEIGHT CM 214/1S | 2,700 Kg. |

MARPOL HARBOUR VESSEL

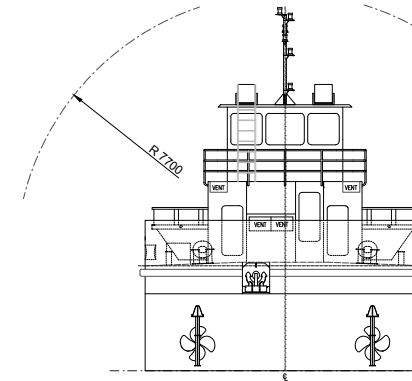
General arrangement

The SYM Naval MARPOL Harbour vessel has been built to broadly meet the demands of the tasks derived from the collection of MARPOL I, IV, V and VI waste. Has a load capacity for MARPOL FLASH POINT I, IV and VI of 230 m³ and for MARPOL V of 30 m³.

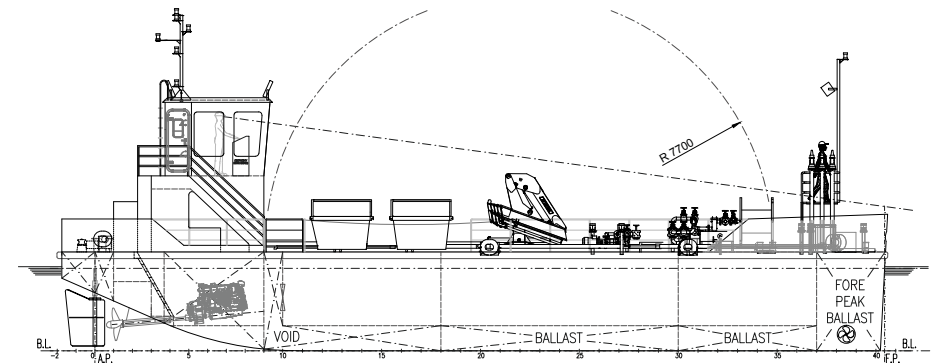
Equipped with two 1,000 mm propellers, its two engines offer a total power of 720 hp that allow it to sail at a speed of up to 7 knots.



DIMENSIONS. It is 25 m long and 8 m wide.



LOADING CAPACITY. Up to 230 m³ and 11 m³ of fuel.



DECK CRANE. Hydraulic crane with a capacity of 2.5 tn to 8 m.

MARPOL HARBOUR VESSEL

Designed for the collection of MARPOL I, IV, V and VI waste.

A unique model

The MARPOL Harbour vessel TM-083-023 is the right solution to provide MARPOL service in the most efficient way. Certified to meet a flash point < 60°, this model has, due to its operational requirements and dimensions, been a technical and technological challenge that SYM Naval has been able to take on thanks to the high professional level of its team of production engineers and technicians.

BUREAU VERITAS: + HULL AND MACHINERY, OIL TANKER, FLASH POINT < 60°, SHELTERED WATERS

SPANISH FLAG: GROUP III, S CLASS

TYPE OF LOAD: MARPOL I, IV, V, VI

MANEUVERABILITY

At the lowest cost thanks to a suitable design.



RELIABILITY

High quality materials and components.



CUSTOMIZATION

Criteria and participation of the shipowner.



ECONOMY

The best value for money from the market.



MARPOL HARBOUR VESSEL

Designed for the collection of MARPOL I, IV, V and VI waste.



Technical specifications

| DIMENSIONS | |
|-------------------------------|----------------------|
| LOA | 25 m |
| LPP | 23.96 m |
| BEAM | 8 m |
| DEPTH | 3 m |
| DRAUGHT | 2.5 m |
| PERFORMANCE | |
| BOLLARD PULL | N/A |
| SPEED | 7 kn |
| CAPACITY | |
| HYDRAULIC OIL | 0.4 m ³ |
| BILGE WATER | 1.32 m ³ |
| BILGE | 1.55 m ³ |
| FRESH WATER - PORT | 2.17 m ³ |
| FUEL | 11 m ³ |
| FLASH POINT CARGO | <60° |
| PROPULSION AND CONTROL SYSTEM | |
| MAIN ENGINES | 2x DOOSAN L126 TIH |
| TOTAL POWER | 2x 360 HP |
| REDUCTION GEARBOX | DMT |
| PROPELLER | 2x 1,070 mm |
| STEERING GEAR | Semi-balanced Rudder |

| COMMUNICATION AND NAVIGATION SYSTEM | |
|--|-------------------------------|
| VHF DSC | ICOMI IC-M411 |
| AIS | ICOM MA-500TR |
| VHF PORTABLE | EMTEL HT649 |
| PLOTTER - SOUNDER | Furuno FCV 627 |
| GPS ANTENNA | Glomex RA112 |
| RADAR | SIMRAD HALO 20 |
| DECK LAYOUT | |
| ANCHOR | 1x 110 kg Hall |
| ANCHOR WINCH | DZC 1201 |
| TOWING HOOK | N/A |
| AUXILIARY EQUIPMENT | |
| AUXILIARY GENERATORS | 2x 400V 50 Hz MECCALTE 108 kW |
| BILGE PUMPS | LIVERANNI 3700 |
| FIRE PUMP | FEIT AT6 |
| WASTE WATER PUMP | FEIT 40VA |
| FRESH WATER PUMP | FEIT AM990 |
| CARGO PUMP | 2x TRIEF BAL 32R |
| ACCOMMODATION | |
| The vessel is equipped with a cabin for 2 pax including 2 beds with full bathroom, sofa and table. | |
| Workshop facilities including workbench, 380 and 220 V electrical connection. | |

Details and equipment

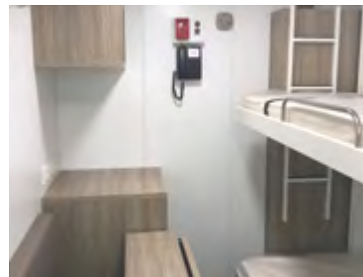
A custom construction to meet the needs of the shipowner and operational requirements of its crew.



CABIN. Custom bridge with semi-balanced rudder.



MACHINE ROOM. Ample work space for the crew.



COMFORT. Cabin for 2 people and rest area.



POWERFUL. A total power of 720 hp.





01 NAVAL
ENGINEERING OFFICE

A **technical department** capable of managing the demanding requirements of shipowners with the highest quality from the beginning to the end of the project.



02 QUALITY
CONTROL

Shipbuilding in steel and aluminum. We design and build custom vessels. IACS classified vessels.



03 WORLDWIDE
ASSISTANCE

Sailing, in port and in dry dock. Maintenance and repair service for vessels in dry dock in the Caribbean area. Worldwide coverage via riding squads.



04 CUSTOM
PROJECTS

Analysis of technical needs of each client for the construction of customized vessels. Seriousness and commitment assumed in all our projects.



05 MORE THAN 25 YEARS
OF EXPERIENCE

A **team made up of professional naval engineers**, project managers and technical staff that work in sync to develop the different phases of a project.



06 COMMITMENT TO
THE ENVIRONMENT

We are **ISO 14001 certified**, a guarantee of our clear commitment to the environment which, in turn, obliges us to maintain the highest environmental standards in all our operations and facilities.



SYM Naval is ISO 14001 certified, a guarantee of its clear commitment to the environment.



SYM Naval has the international ISO 45001 certification for Occupational Health and Safety Management Systems (OSH), which guarantees that their jobs are safe and healthy, preventing accidents and occupational health problems.



SYM Naval is ISO 9001 certified, a guarantee that its processes conform to the highest standards in ship construction, conversion and repair.



SYM Naval contributes to carrying out maintenance, reforestation, cleaning and environmental protection actions, defining specific action plans with the responsible authorities.

When preparing this catalog, an attempt has been made to ensure that its content is correct and up-to-date. The information in this document has been produced using prototypes or pre-series boats. Within the policy of continuous improvement of its products, Ship & Yard Technical Management, S.L. reserves the right to make changes at any time to the specifications or the boats presented in this catalog. If you want to know the most recent and detailed information, you can request it in the commercial department of Ship & Yard Technical Management, S.L. Ship & Yard Technical Management, S.L. reserves all rights. The reproduction, in any form or by any method, of all or part of this publication is prohibited without the written authorization of Ship & Yard Technical Management, S.L.



Barcelona · Miami · Santo Domingo

Muelle Comercial s/n,
Puerto de Vilanova i La Geltrú
08800 Barcelona, Spain

+34 934 910 450
info@sym-naval.com

www.sym-naval.com

