
MOORING BOAT

TM-024-02

www.sym-naval.com



PORT VESSEL NEWBUILDING



MOORING BOAT

TM-024-02

Port support vessels

SYM Naval builds support port vessels ensuring the highest safety and quality standards.

SYM Naval's TM-024-02 mooring boat is a vessel fully adapted to the operational needs of ship-owners and to the demands of international port authorities. With a length of 8.70 meters and a bollard pull of up to 2 tons, the SYM Naval mooring boat is capable of carrying out the most demanding mooring and unmooring tasks.

Equipped with a Doosan L-136TI engine that offers a total power of 230 horsepower at 2,200 rpm, its top speed reaches 11 knots. The compact design of this mooring boat facilitates high maneuverability and stability, a fact that makes it an ideal port vessel to offer support to the different maneuvers that other ships or floating devices must carry out inside the port.

SPANISH FLAG - GROUP III, S CLASS



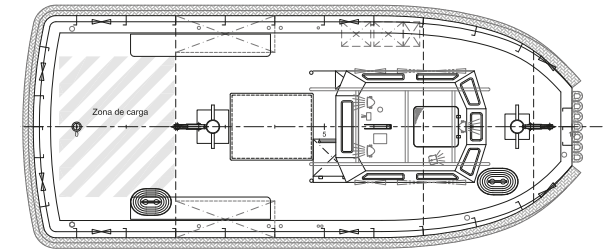
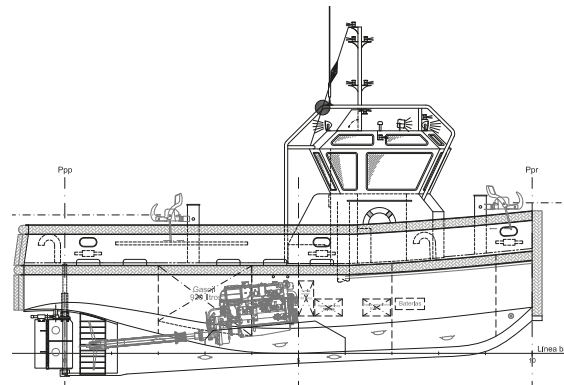
Mooring boat TM-024-02



MOORING BOAT TM-024-02

General layout

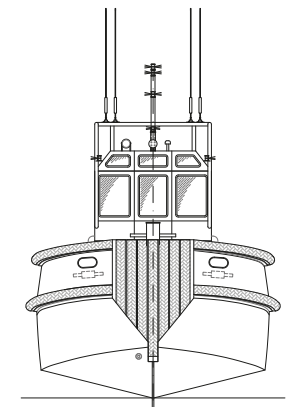
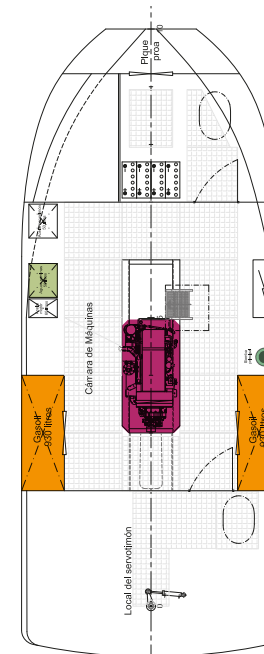
The **TM-024-02 mooring boat** is SYM Naval's lightest boat. Its 8.7 meters long and 3.6 meters wide make it an ideal port vessel for mooring and unmooring tasks for other vessels. It has a total power of 230 hp and has a bollard pull force of up to 2 tons.



DIMENSIONS. 8.7 m long and 3.6 m wide.

SECURITY AND QUALITY. Built to the highest standards in the industry.

DIESEL OIL	Capacidad de carga de combustible de 1,8 m ³
ENGINE	Doosan L-136TI de 230 cv at 2.200 rpm.
BILGE	Three RULE 2700 pumps.
FIRE PUMP	FEIT 21 m ³ 3.5 BAR pump.



HARBOUR USE. Adapted to the needs of the shipowner.





MOORING BOAT TM-024-02

General layout



Technical specifications

DIMENSIONS	
LOA	8,70 m
BEAM	3,6 m
DEPTH	1,50 m
DISPLACEMENT	18 tn
OPERATIONAL CHARACTERISTICS	
BOLLARD PULL	2 ton
SPEED	8 kn
CAPACITY	
HYDRAULIC OIL	60 lts
BILGE	60 lts
FUEL	1,2 m ³
PROPULSION AND CONTROL SYSTEM	
MAIN ENGINES	1xDOOSAN L-136TI
TOTAL POWER	230 CV a 2.200 RPM
REDUCTION GEARBOX	DMT-110 / 3,19:1
PROPELLER	1x840 mm 4 fixed pitch blades
STEERING GEAR	High performance flap rudder
COMMUNICATION AND NAVIGATION SYSTEM	
VHF DSC	CLASE B - ICOM
AIS	ICOM MA-500TR
VHF PORTABLE	EMTEL HT649
TRANSDUCER	Furuno FCV 627
PLOTTER - SOUNDER	Furuno FCV 627
ANTENNAS	Shakespeare MOD 5400 XT
RADAR	N/A

DECK LAYOUT	
ANCHOR	1x45 kg. Electrically driven at 24V
TOWING HOOK	SYM TH02
AUXILIARY EQUIPMENT	
BATTERIES	2x 24 V 230 Ah
GENERATORS	1x Generator PRESTOLITE 175 ^a
BILGE PUMPS	3x RULE 2700
FIRE PUMPS	FEIT 21m3 3.5 BAR
WASTE WATER PUMPS	N/A
BOILER	N/A

Details and equipment



EQUIPPED. Equipped to work under the demands of port support tasks.



CABIN. With the necessary visibility to safely direct support operations in port.



PROPULSION AND CONTROL. 850 mm propeller in nozzle and rudder with high-performance flaps.



MACHINE ROOM. Ample work space for the crew.



01 NAVAL
ENGINEERING OFFICE

A **technical department** capable of managing the demanding requirements of shipowners with the highest quality from the beginning to the end of the project.



02 QUALITY
CONTROL

Shipbuilding in steel and aluminum. We design and build custom vessels. IACS classified vessels.



03 WORLDWIDE
ASSISTANCE

Sailing, in port and in dry dock. Maintenance and repair service for vessels in dry dock in the Caribbean area. Worldwide coverage via riding squads.



04 CUSTOM
PROJECTS

Analysis of technical needs of each client for the construction of customized vessels. Seriousness and commitment assumed in all our projects.



05 MORE THAN 25 YEARS
OF EXPERIENCE

A **team made up of professional naval engineers**, project managers and technical staff that work in sync to develop the different phases of a project.



06 COMMITMENT TO
THE ENVIRONMENT

We are **ISO 14001 certified**, a guarantee of our clear commitment to the environment which, in turn, obliges us to maintain the highest environmental standards in all our operations and facilities.



SYM Naval is ISO 14001 certified, a guarantee of its clear commitment to the environment.



SYM Naval has the international ISO 45001 certification for Occupational Health and Safety Management Systems (OSH), which guarantees that their jobs are safe and healthy, preventing accidents and occupational health problems.



SYM Naval cuenta con la certificación ISO 9001, garantía de que sus procesos se ajustan a los mas altos estándares en construcción, conversión y reparación de buques.



SYM Naval contributes to carrying out maintenance, reforestation, cleaning and environmental protection actions, defining specific action plans with the responsible authorities.

When preparing this catalog, an attempt has been made to ensure that its content is correct and up-to-date. The information in this document has been produced using prototypes or pre-series boats. Within the policy of continuous improvement of its products, Ship & Yard Technical Management, S.L. reserves the right to make changes at any time to the specifications or the boats presented in this catalog. If you want to know the most recent and detailed information, you can request it in the commercial department of Ship & Yard Technical Management, S.L. Ship & Yard Technical Management, S.L. reserves all rights. The reproduction, in any form or by any method, of all or part of this publication is prohibited without the written authorization of Ship & Yard Technical Management, S.L.



Barcelona · Miami · Santo Domingo

Muelle Comercial s/n,
Puerto de Vilanova i La Geltrú
08800 Barcelona, Spain

+34 934 910 450
info@sym-naval.com

www.sym-naval.com

